

Version 9.2 Features

1. Updated Job Screen
2. Updated Job Details linked with Bidsummary
3. Traser SX integration with unattended updates
4. Bid Summary Labor Groups made easier
5. Extension report order sorting
6. Update NECA labor units with Traser
7. Supplier Pricing inside Edit Extension

1. Updated Job Screen

JOBS																	
Active (9)		Inactive (2)		All Jobs (38)		Commercial (4)		Residential (2)		2008 (5)		2007 (4)		2006 (4)		2005 (4)	
Estimate	Job Name	Lead Estimator	Bid Success	Sell Price	Total Return	Price Per Square Foot											
E-4122	Johnson Express	Ed Jones	Won	\$112,436.45	17.45%	5.98											
E-4157	Ed's CAD Track Drawing Changes	Admin	Won	\$4,789,156.00	16.54%	9.22											
E-4233	Conference Takeoff Quote	Admin	Lost	\$290,237.12	25.54%	9.26											
E-4344	149 West Boston Small Renovation	Admin	Won	\$29,396.05	17.11%	7.2											
E-4494	149 West Boston Large Renovation	Admin	Won	\$284,293.33	19.67%	12.85											
E-4523	Ed's CAD Job Progress	Admin	Won	\$3,091,288.64	21.24%	8.7											
E-4662	Flemming Manufacturing	John Elwood	Won	\$784,512.59	19.65%	12.43											
E-4874	Capital Supply Company	Joe Creton	Lost	\$452,784.00	23.28%	9.89											
E-4972	Carlson Construction	Lori Cherniak	Won	\$76,851.12	15.85%	12.39											

Job Screen— previously you had two tabs, “active” and “inactive” jobs. Now, you can have up to 20.

Example: You can have tabs with headings by the estimators in your department (tabs named Tom, Dick, and Harry). Or you could have tabs that break down your past jobs by year (2009, 2008, 2007, etc.). OR: If your company has several offices (Brooklyn, the Bronx, Bayonne, and Camden), or even job type (residential, commercial, hospitals, bids won, bids lost, etc.)

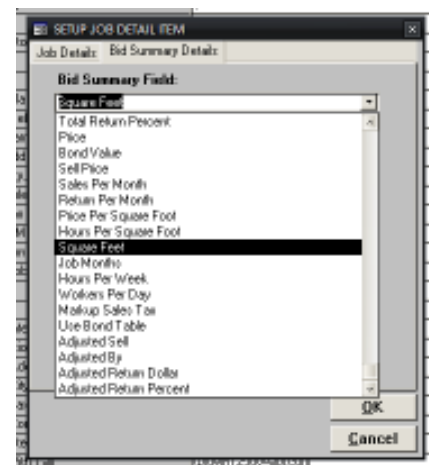
These tabs can re-arranged and also marked invisible to hide older jobs to reduce clutter and still have the jobs available.



2. Updated Job Details linked with Bidsummary

Now you can create Job Details that are linked to your bid summary information. These details can be assigned to the job screen and displayed along with job name lead estimator etc.

This is also covered by security and you can force all users to view the same set of detail columns, this allows you to have the project managers and owners view the Square foot price and final sell price of all jobs, while hiding these specs from the standard estimators.

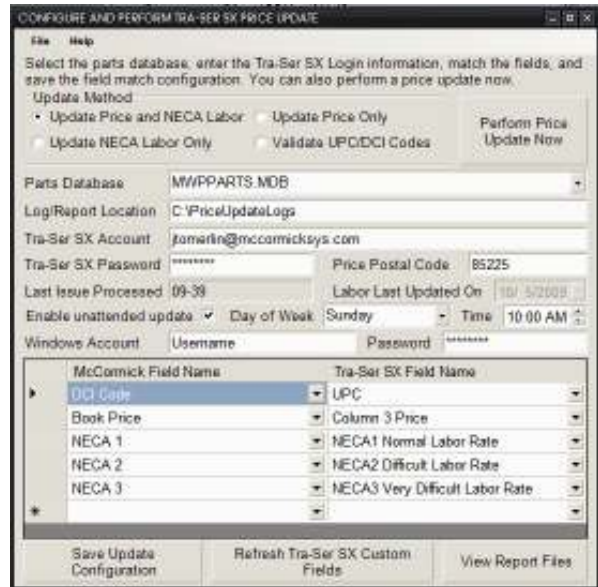


3. Unattended updates

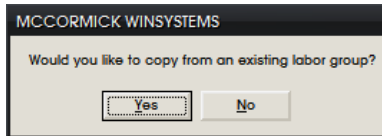
With 9.2 users can now set up the Price updating to be run unattended, this allows you to set it to kick off once a week and view the log files at your leisure. These report files are now stored as internal files that are kept so you can look at past reports without worrying about printing them at the time you did the update.

4. Traser SX integration

You can now validate any existing UPC/DCI code to see if it does not exist within Traser's system. This will help you flush out any items that are discontinued or otherwise invalid.



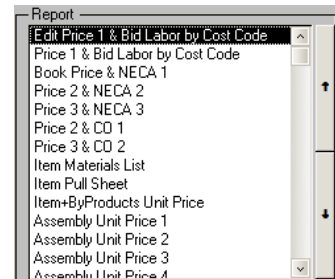
5. Labor Group creation easier



When you create a new labor group the program will ask you if you would like to copy an existing group.

6. Extension report order sorting

If you have rights to edit the extension reports there will be arrows allowing you to sort the order of these reports. Now you can move your most common reports to the top and drop all the non used ones to the bottom



7. Update NECA labor units with Traser

You can now update all 3 NECA labor levels with your weekly price update. No more having to break out the book every few years and go through the database!

8. Supplier Exchange

Trade Service's Supplier Exchange is another new service from the vendor. You can now use this with McCormick software to evaluate prices from multiple suppliers and, if you like, "cherry pick" the prices you like from each supplier.

The update takes seconds for each vendor and comes free with your trade service subscription.

No more manually loading price update files.

Quantity	Item Name	Bid Lib	Bid Lib Ext	Graybar	Rexel	Gexpro
87,979.50	12 THHN CU SOLID	4.00 M	351.92	\$139.02 M	\$152.92 M	\$147.36 M
2,730.00	8 THHN CU STRANDED	6.00 M	16.38	\$378.77 M	\$416.65 M	\$401.50 M
1,215.00	3 THHN CU STRANDED	9.00 M	10.94	\$1,275.34 M	\$1,402.65 M	\$1,351.64 M
4,850.00	500 THHN CU STRANDED	4.20 C	204.12	\$1,134.11 C	\$1,236.52 C	\$1,191.56 C
17,290.00	1/2 EMT	2.00 C	345.00	\$44.59 C	\$43.91 C	\$43.24 C
12,600.00	3/4 EMT	3.00 C	378.00	\$83.68 C	\$82.41 C	\$81.15 C
945.00	3 EMT	10.00 C	94.50	\$810.00 C	\$601.35 C	\$592.10 C
54.00	3 EMT 90 ELBOW	19.00 C	10.26	\$5,953.91 C	\$5,953.70 C	\$5,773.48 C
1,729.00	1/2 EMT CONN D/S	4.00 C	69.16	\$32.26 C	\$31.68 C	\$32.83 C
36.00	3 EMT CONN D/S	18.00 C	6.48	\$837.98 C	\$872.12 C	\$903.84 C
1,260.00	3/4 EMT CONN D/C	5.00 C	63.00	\$94.29 C	\$92.61 C	\$95.98 C
1,729.00	1/2 EMT COUP D/S	3.00 C	51.87	\$35.39 C	\$34.76 C	\$35.02 C
148.50	3 EMT COUP D/S	15.00 C	22.28	\$735.44 C	\$722.30 C	\$748.57 C
2,161.25	1/2 EMT 1 HOLE STP/STL	3.00 C	64.84	\$14.27 C	\$15.02 C	\$14.52 C
2,520.00	3/4 EMT 1 HOLE STP/STL	3.00 C	75.60	\$19.08 C	\$20.09 C	\$19.42 C
172.13	3 EMT 1 HOLE STP/STL	4.00 C	6.39	\$269.47 C	\$283.33 C	\$273.89 C
1,064.00	1/2 LOCKNUT	0.00 X	0.00	\$9.11 C	\$9.95 C	\$9.27 C
65.00	3/4 LOCKNUT	0.00 X	0.00	\$14.25 C	\$14.00 C	\$14.51 C
36.00	3 BUSH PLASTIC	55.00 C	19.80	\$220.76 C	\$213.03 C	\$220.78 C
30.00	3/8" LAG EXP. SHIELD	6.00 C	1.80	\$29.24 C	\$29.12 C	\$28.68 C
30.00	3/8" X 3" LAG BOLT	14.00 C	4.20	\$20.75 C	\$19.95 C	\$20.35 C
30.00	3/8" WASHER	0.00 X	0.00	\$7.84 C	\$7.54 C	\$7.69 C
172.13	1/2 MACHINE BOLT ANCH	19.00 C	32.70	\$68.99 C	\$68.34 C	\$67.67 C
3,469.49	BOX SUPPORTS-CLIP ON	3.00 C	104.08	\$57.07 C	\$58.31 C	\$62.04 C
36.00	1 1/2 KINDORF-B905	5.00 C	1.80	\$377.54 C	\$385.78 C	\$410.37 C
10,640.00	1/2 PVC 40	2.00 C	212.80	\$54.29 C	\$57.14 C	\$55.24 C