

# ESTIMATING SYSTEMS

PC SCALE FOR WINDOWS



## The Nations Leader in Estimating Software!

### Be more productive in less time.

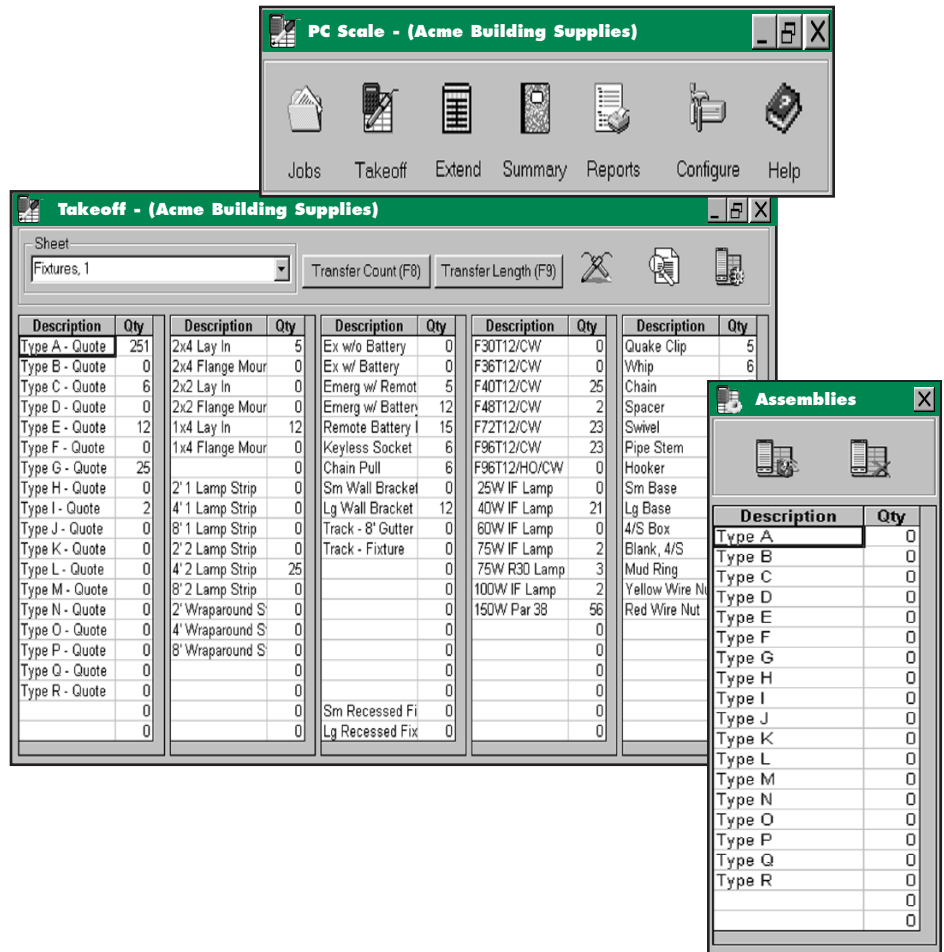
Your professional time is too valuable to waste on repetitive tasks. Whether you're counting outlets in a commercial building, measuring the length of a run, or calculating square feet of an area, you need numbers fast, and those numbers need to be accurate. That's why you need PC Scale for Windows. It performs the tedious shirtsleeve counting and measuring work quickly, so you can get right to the heart of the estimate.

### Yes, counting & measuring can be fun.

PC Scale is a program that installs right into your computer and does not require any additional hardware to run. With PC Scale, both the count and length probes are always ready to use for direct entry right into your computer. This enables you to prepare a report in lightning speed and makes your job much easier and a lot more fun.

### As easy as Point & Click.

That's all it takes to call up PC Scale to the screen. Point and click and you are ready to roll, count, measure, and calculate. Your scale can be set to any conceivable scale configuration including metric. With PC Scale for Windows, you don't have to spend precious time learning a new program. Just less time producing more accurate work.



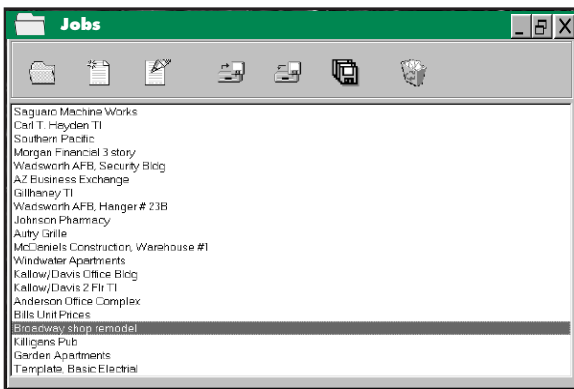
TO GET STARTED CALL:

**1-800-444-4890**

480/831-8914 • 480/820-2422 (fax)

149 West Boston • Chandler, Arizona 85225 • [www.mccormicksys.com](http://www.mccormicksys.com)





## Jobs

PC Scale for Windows Jobs area is where you get started by opening a new job or choosing an existing estimate. PC Scale will help organize your estimates to insure you stay on top. Other features include utilities to backup, save, and restore jobs when needed. The copy feature is great for repeat work. Copying an existing job or a template job into the job you are starting will allow you to take advantage of repetitive work.

**Takeoff - (Acme Building Supplies)**

Description	Qty	Description	Qty	Description	Qty	Description	Qty	Description	Qty
Type A - Quote	251	2x4 Lay In	5	Ex w/o Battery	0	F30T12/CW	0	Quake Clip	5
Type B - Quote	0	2x4 Flange Mour	0	Ex w/ Battery	0	F36T12/CW	0	Whip	6
Type C - Quote	6	2x2 Lay In	0	Emerg w/ Remot	5	F40T12/CW	25	Chain	5
Type D - Quote	0	2x2 Flange Mour	0	Emerg w/ Batten	12	F48T12/CW	2	Spacer	4
Type E - Quote	12	1x4 Lay In	12	Remote Battery I	15	F72T12/CW	23	Swell	5
Type F - Quote	0	1x4 Flange Mour	0	Keyless Socket	6	F96T12/CW	23	Pipe Stem	6
Type G - Quote	25	0	0	Chan Pull	6	F96T12/HO/CW	0	Hooker	6
Type H - Quote	0	2' 1 Lamp Strip	0	Sm Wall Bracket	0	25W IF Lamp	0	Sm Base	6
Type I - Quote	2	4' 1 Lamp Strip	0	Lg Wall Bracket	12	40W IF Lamp	21	Lg Base	5
Type J - Quote	0	8' 1 Lamp Strip	0	Track - 0' Gutter	0	60W IF Lamp	0	4/S Box	5
Type K - Quote	0	2' 2 Lamp Strip	0	Track - Fixture	0	75W IF Lamp	2	Blank, 4/S	5
Type L - Quote	0	4' 2 Lamp Strip	25	0	0	75W R30 Lamp	3	Mud Ring	5
Type M - Quote	0	8' 2 Lamp Strip	0	0	0	100W IF Lamp	2	Yellow Wire Nut	25
Type N - Quote	0	2' Wraparound S	0	0	0	150W Par 38	56	Red Wire Nut	0
Type O - Quote	0	4' Wraparound S	0	0	0	0	0	0	0
Type P - Quote	0	8' Wraparound S	0	0	0	0	0	0	0
Type Q - Quote	0	0	0	0	0	0	0	0	0
Type R - Quote	0	0	0	Sm Recessed Fi	0	0	0	0	0
0	0	0	0	Lg Recessed Fix	0	0	0	0	0

## Takeoff

Takeoff saves you time by using item and assembly level takeoff. You can use the takeoff probes or manually enter lump sum quantities directly by keyboard or mouse. Your material list can be updated by most major pricing services. PC Scale for Windows will become a valuable asset to your company's productivity and most important to the bottom line. Totals for material and labor are sent to Reports and the Bid Summary.

**Bid Summary - Selection**

Qty	System	Material	Adjusted Material	Labor	Adjusted Labor
1	1.00 Pictures, 1	\$673.28	\$673.28	156.30	156.30
2	1.00 Pictures, 2	\$4,243.69	\$4,243.69	39.00	39.00
3	1.00 Device, Switch	\$679.27	\$679.27	15.44	15.44
4	1.00 Device, Recept	\$1,434.93	\$1,434.93	63.00	63.00
5	1.00 Branch, 1	\$5,215.03	\$5,215.03	165.77	165.77
6	1.00 Branch, 2	\$1,195.95	\$1,195.95	57.64	57.64
7	1.00 Feeder, Small	\$0.00	\$0.00	0.00	0.00
8	1.00 Feeder, Large	\$11,151.12	\$11,151.12	301.15	301.15
9	1.00 Feeder, EMT	\$3,207.44	\$3,207.44	42.73	42.73
10	1.00 Load Centers	\$0.00	\$0.00	0.00	0.00
11	1.00 Panel Boards	\$0.00	\$0.00	149.00	149.00
12	1.00 Service, Metering	\$79.69	\$79.69	279.37	279.37
13	1.00 Service, Switches	\$0.00	\$0.00	168.00	168.00
14	1.00 Flex / Lugs / Condulets	\$168.05	\$168.05	9.80	9.80
15	1.00 Flex / Lugs / Condulets	\$523.95	\$523.95	13.30	13.30
16	1.00 House Wiring	\$0.00	\$0.00	0.00	0.00
17	1.00 -Future 1-	\$0.00	\$0.00	0.00	0.00
18	1.00 -Future 2-	\$0.00	\$0.00	0.00	0.00
19	1.00 -Future 3-	\$0.00	\$0.00	0.00	0.00
20	1.00 -Future 4-	\$0.00	\$0.00	0.00	0.00

Total Adjusted Material: \$29,172.52      Total Adjusted Labor: 1,541.57

## Reports

McCormick's report generator allows you to completely document and review your estimates. Reports come ready to use in PC Scale for Windows. Each item and assembly will appear in your reports showing totals for quantity, price, extended price, labor, and extended labor. Reports are automatically generated from takeoff. Having complete documentation is crucial to appearing professional to your customer base. Remember, quality is remembered long after the price is forgotten.

**Bid Summary - Markup**

Overhead	Percent %	Amount \$
Material	1.56	\$453.95
Labor	1.04	\$562.29
Quotes	0.00	\$5,136.00
Sub Contractors	0.00	\$346.36
Direct Job	0.00	\$1,260.00
Total Overhead	0.00	\$7,758.60
All Overhead by	0.00	0.00
Profit	10.00	\$9,088.61
Bond Multiplier	0.0000	\$0.00

Markups	Amount \$
Material	\$29,172.52
Labor	\$53,955.02
Quotes	\$0.00
Sub	\$0.00
Direct Job	\$0.00
Sales Tax	\$2,042.08
RawCost+Tax	\$85,169.62
Total Return	\$16,847.21
Final Price	\$102,016.84
Bond	\$0.00
Sell Price	\$102,016.84

## Bid Summary

Bid Summary is where you recap and prepare your bid to submit. Enter your quotations, sub contractors, other cost, and markups. The Markup screen (shown) is where you can evaluate your entire estimate on one screen to make the crucial value judgment decisions necessary to generate a competitive bid price.

**1-800-444-4890**

480/831-8914    480/820-2422 (fax)

149 West Boston • Chandler, Arizona 85225

www.mccormicksys.com

