



RELEASE NOTES

V.16.3.2 | APRIL 2025

Thank you for taking a moment to review the McCormick Systems V.16.3.2 release notes. This release will update your software to McCormick Systems V.16.3.2.

If you have any questions during the update process, you can contact McCormick support at (800) 444-4890.

MCCORMICK V.16.3.2

BID SUMMARY

Software Maintenance

- Fix to prevent other “Cost” tabs from not calculating correctly under certain circumstances.

JOB SCREEN

Software Maintenance

- Increased the speed of job screen when loading a large number of jobs.

MCCORMICK V.16.3.1

EXTENSION

Software Maintenance

- Update Vendor Pricing: Fixed a problem where not all parts were being returned in the list. Previously, once a certain status was found on a part, the remaining parts would not be listed.
- App shutting down unexpectedly: Addressed an issue related to the Send To Summary and Unlinking Extensions functionality. Specifically, a linked extension was displaying unlinked report data, causing a conflict during the writing of unlinked reports, which led to the app crashing.
- Blank Extensions: Fixed the validation process that checks if a report has any sections selected. In previous versions, the validation retrieved the report from the installation (linked data) even when loading a linked extension, leading to a mismatch in report IDs. This mismatch caused the report to be null, and the validation attempted to check a property on the null object, resulting in blank extensions.


- Export Excel Print Preview Bug: Fixed the Export to Excel functionality.


MCCORMICK V.16.3

FEATURES


Introducing the Landing Page

The Landing Page gives the users an overview of important tasks as you log in. This is fully customizable to your company needs, and this feature shows you various items such as the last jobs you were in, any bids coming due, and company messages you want to convey on login.


Eddy's Electrical Estimating
Settings
Close


My Recent Jobs
Add New

Name	Job No.	Job Tab
149 W. Boston	52	Commercial
4512 W Main	16	Residential
LOMAX Industries	48	Industrial
Harrison Building	25	Industrial
Flemming Manufacture	42	Industrial
McCormick Business Park	29	Industrial
Buckeye Surf Tools	50	Commercial


Bids Coming Due

Date	Name	Job No.	Lead Est.
02/15/2025	Harrison Building	25	Est TD
02/15/2025	Flemming Manufacture	42	Est1
02/15/2025	LOMAX Industries	48	Est ABS
02/18/2025	4512 W Main	16	Est2
02/22/2025	149 W. Boston	52	Admin

5 Bid(s)


Company Messages
Add New

Admin 2/12/2025 10:01:49 AM

The parking lot is being resurfaced from 2/17-2/20

Please use parking garage across the street

Admin 2/12/2025 10:01:18 AM

Pizza party Friday!


Change Orders Alert Date

Current Users

The robust settings for the Landing Page allow you to customize the feature for your company's needs.

Settings

×

Company Name


Eddy's Electrical Estimating

Company Logo

Upload new

Remove current

Supported files are JPEG, JPG, or PNG
Max file size 10 MB



Company Logo Position

Logo position relative to company name

☒ Left ☐ Right

Recent Jobs

Number of prior jobs to display

7

jobs

(max 25)

Bid Due Range

Days from today to appear in the list

14

days

(max 365)

Change Order Due Range

Days from today to appear on list

20

days

(max 365)

Company Messages

Max number of recent messages

5

messages

(max 25)

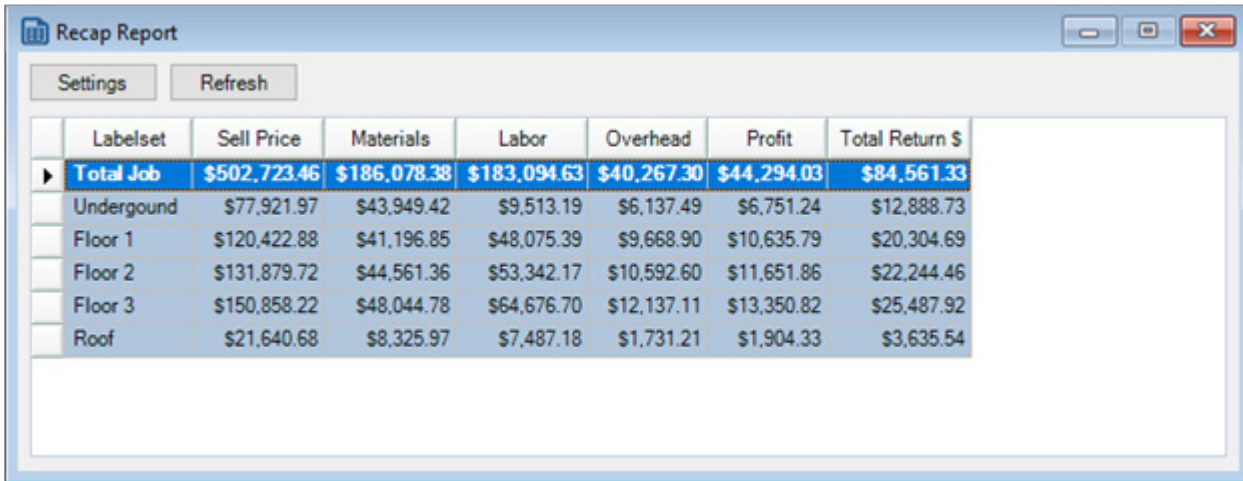
Restore Defaults

OK

Recap Report - Pro Only Feature

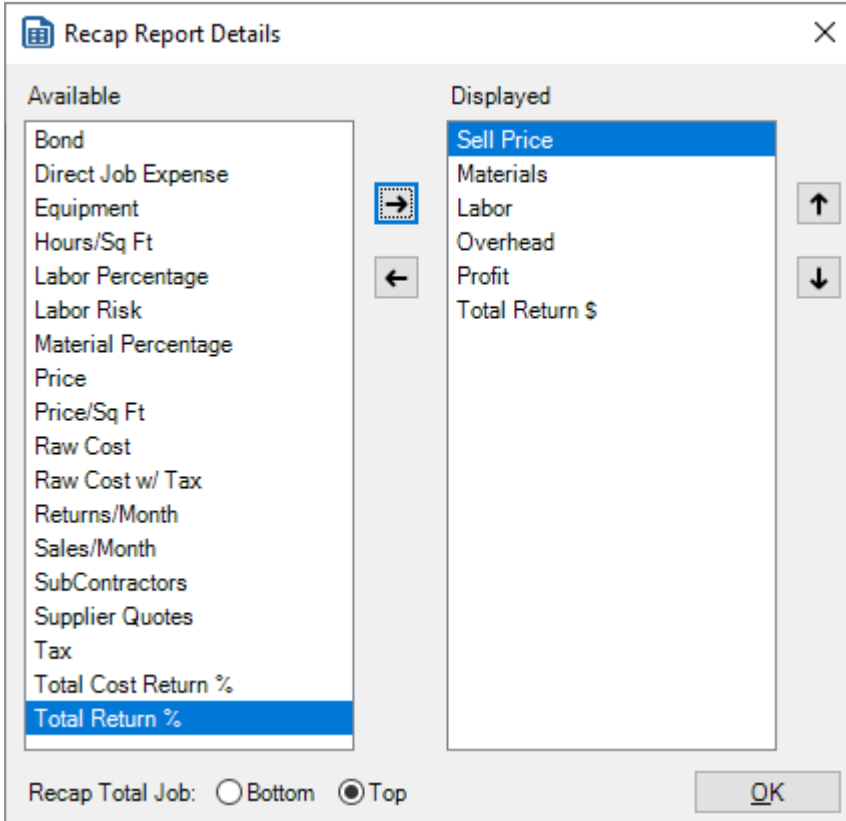
The Recap Report is a much-awaited feature that combines the power of our new ability to breakout label sets with bidsummary totals. Currently, you can view the sell price and other details for each breakout, but you cannot see them all at once. With Recap Report, you can view all this data at once. You can export this to Excel or include the chart in your proposal/bidsummary. This is also fully customizable to allow you to select which data you want in this report.

Recap Report is intended to be a quick summery or overview of critical data. If you have more than six columns, the printout may not look great, but the excel export can handle anything, just keep that in mind.



The Recap Report window displays a table with the following data:

	Labelset	Sell Price	Materials	Labor	Overhead	Profit	Total Return \$
▶	Total Job	\$502,723.46	\$186,078.38	\$183,094.63	\$40,267.30	\$44,294.03	\$84,561.33
	Underground	\$77,921.97	\$43,949.42	\$9,513.19	\$6,137.49	\$6,751.24	\$12,888.73
	Floor 1	\$120,422.88	\$41,196.85	\$48,075.39	\$9,668.90	\$10,635.79	\$20,304.69
	Floor 2	\$131,879.72	\$44,561.36	\$53,342.17	\$10,592.60	\$11,651.86	\$22,244.46
	Floor 3	\$150,858.22	\$48,044.78	\$64,676.70	\$12,137.11	\$13,350.82	\$25,487.92
	Roof	\$21,640.68	\$8,325.97	\$7,487.18	\$1,731.21	\$1,904.33	\$3,635.54



The Recap Report Details window allows customization of the report. It features two lists: 'Available' and 'Displayed'. The 'Available' list includes various cost and return categories, with 'Total Return %' selected. The 'Displayed' list shows the current report fields: 'Sell Price', 'Materials', 'Labor', 'Overhead', 'Profit', and 'Total Return \$'. Navigation arrows are provided between the lists. At the bottom, there is a radio button selection for 'Recap Total Job' (Bottom or Top) and an 'OK' button.

Available:

- Bond
- Direct Job Expense
- Equipment
- Hours/Sq Ft
- Labor Percentage
- Labor Risk
- Material Percentage
- Price
- Price/Sq Ft
- Raw Cost
- Raw Cost w/ Tax
- Returns/Month
- Sales/Month
- SubContractors
- Supplier Quotes
- Tax
- Total Cost Return %
- Total Return %**

Displayed:

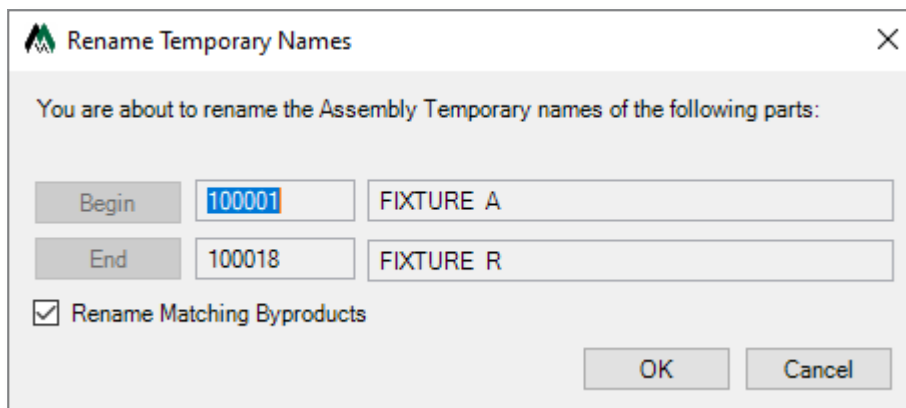
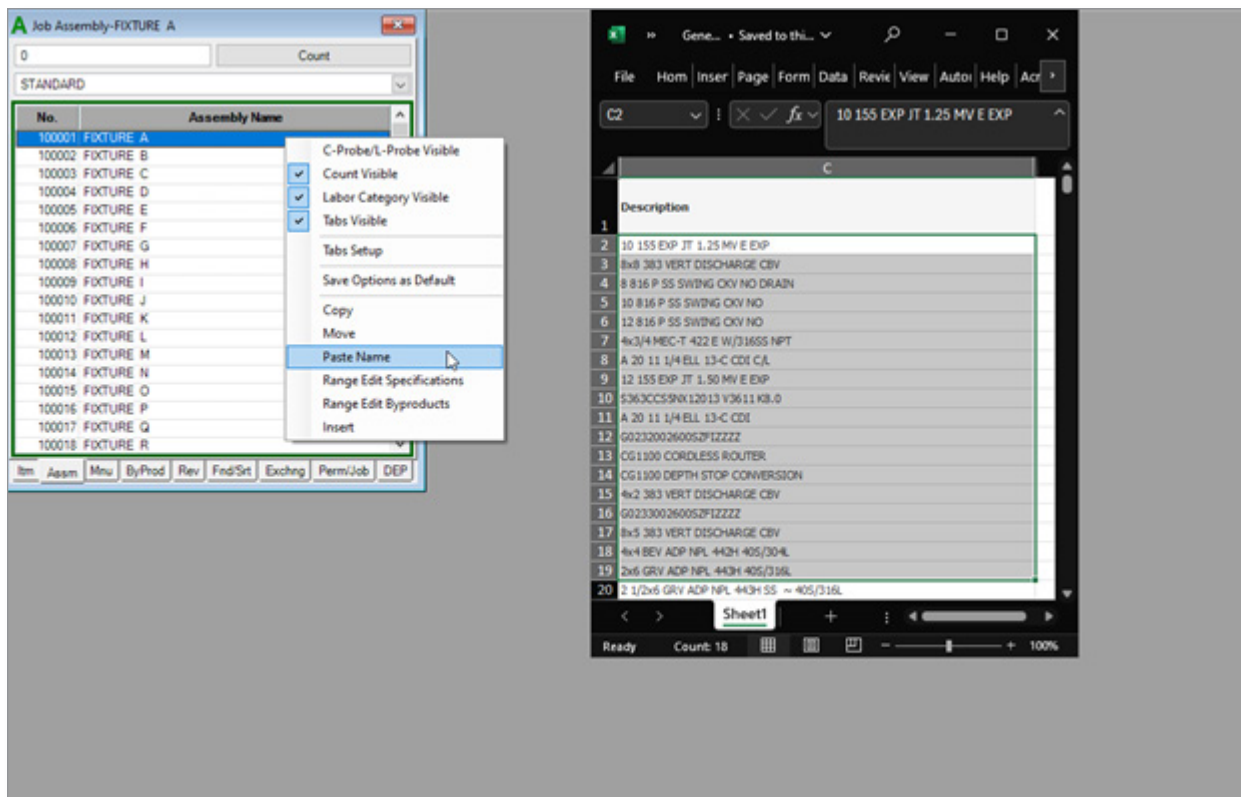
- Sell Price**
- Materials
- Labor
- Overhead
- Profit
- Total Return \$

Recap Total Job: ☐ Bottom ☒ Top

OK

Copy Temporary Names from Excel into McCormick

Complicated fixture schedules or detailed assembly lists can now be copied from Excel directly into Temporary Fixtures with the option to auto rename the byproducts.



A Job Assembly-FIXTURE A

0 Count

STANDARD

No.	Assembly Name
100001	10 155 EXP JT 1.25 MV E EXP
100002	8x8 383 VERT DISCHARGE CBV
100003	8 816 P SS SWING CKV NO DRAIN
100004	10 816 P SS SWING CKV NO
100005	12 816 P SS SWING CKV NO
100006	4x3/4 MEC-T 422 E W/316SS NPT
100007	A 20 11 1/4 ELL 13-C CDI C/L
100008	12 155 EXP JT 1.50 MV E EXP
100009	S363CCS5NX12013 V3611 K8.0
100010	A 20 11 1/4 ELL 13-C CDI
100011	G0232002600SZFIZZZZ
100012	CG1100 CORDLESS ROUTER
100013	CG1100 DEPTH STOP CONVERSION
100014	4x2 383 VERT DISCHARGE CBV
100015	G0233002600SZFIZZZZ
100016	8x5 383 VERT DISCHARGE CBV
100017	4x4 BEV ADP NPL 442H 40S/304L
100018	2x6 GRV ADP NPL 443H 40S/316L
100019	FIXTURE S

Itm Assm Mnu ByProd Rev Fnd/Srt Exchng Perm/Job DEP

BID SUMMARY

Software Maintenance

- Totals were incorrect in combined summaries with markup tax overhead or profit. 133591
- Adjusted column width in *Other Costs* for easier readability. 135879
- A blank page appeared in Print Preview. 135883
- Changes to label name were not immediately displayed. 135984
- Print did not display updated order of costs. 137558
- "Other Taxes" tab totals sometimes appeared incorrectly on combined summaries. 137790
- Large numbers were wrapped incorrectly. 144086
- Error could appear in *Labor Total* row if no labor had been filled out in print. 145462
- Issues appeared in totals if a labelset combination with no takeoff was used. 145724
- Resolved unique scenario where adding Other Cost could result in error. 146051
- Long labels were cut off in *Labor* section of Bid Summary print. 149323
- Large Amount wraps to next line in Print Preview. 150460
- Labor Cost total in Bid Summary Report was sometimes incorrect after editing labor to

"0%." 153662

- Resolved issue with overhead and profit percentage copied to fields that do not contain values. 153673
- Profit and overhead percentages were sometimes incorrect after filtering. 154573

CHANGE ORDER

Software Maintenance

- An incorrect bid date displayed in Print Preview for change order. 131904

DEP

Software Maintenance

- Updates to shape title would not always update immediately. 132256
- Resolved issue rotating drawing in Job Details window. 134664
- "Route" was not selected when auto counting length takeoff. 140255
- Audit trail totals after resizing lines with DEP collapsed disabled. 143182
- Resolved issue renaming symbols in symbol designer. 148571
- Labelsets locked to a specific sheet were not locked to that sheet when pasted into a new job. 149132
- New drawing upload indicator did not always display in for Hosted users. 149908

EXTENSION

Software Maintenance

- You can no longer delete labels if they exist in an unlinked extension. 153888
- The "Material" tab would be incorrectly auto-selected when trying to select a different extension from the "Labels" tab. 112108
- Labelsets could overlap in Print Preview. 117261
- The header in extension may not have aligned with values below. 130195
- Both labor and price values were sometimes selected during a cherry pick. 133348
- % *Ext Price* and % *Ext Hours* columns may not have displayed in Print Preview. 135386
- Export to Excel did not display all decimal places shown. 135710
- Long report names were cut off in Print Preview. 137433
- Long labelsets overlapped footer in Print Preview. 137435
- Resolved some issues with range edit on price and labor with separated labels. 138277
- Incorrect prices were be highlighted. 138452
- Resolved some issues with MinZ formula. 143205
- Resolved some issues with Min formula. 143776
- The exclusive lock icon would not always display. 146026

- A crash would sometimes occur when unlocking a locked extension after attempting an edit. 147889
- Export to Excel or Print Preview showed decimal values for part number. 149066
- The dollar sign (\$) displayed in total for labor hours section of Print Preview. 149825
- Assembly number had decimal places in *Assemblies* section. 151990
- Print Preview would show incorrect takeoff order. 152924
- [Update Grouping] button may not display in “Assemblies” tab. 153147
- Removed unnecessary *CCode* column that could appear after applying material filter in extension. 153840
- Cost Code adjustment reverted after selecting [Update Groupings] button. 153904
- Adjusted unit was not highlighted in bold in Print Preview. 153905

INTEGRATION

Software Maintenance

- New costs could be incorrectly positioned in *Summary Pages* section of export. 131871
- The order of other costs would not always show in updated order in FOUNDATION export. 143214

PROPOSAL SHEET

Software Maintenance

- Word wrap in proposal sheet caused too many digits to appear. 150458

SYSTEM

Software Maintenance

- Newly created jobs did not always appear for other users in system. 89441
- Pasting extension reports from multiple jobs may not always display the correct reports. 106030
- Excel price update did not update all records displayed in *Matched* section. 149125
- List value would change to “None.” 150509
- Resolved issues with importing duplicate cost codes with parts import. 153847
- The Multiplier window was not set to “Always on top.” 153953

MCCORMICK V.16.2.0

FEATURES

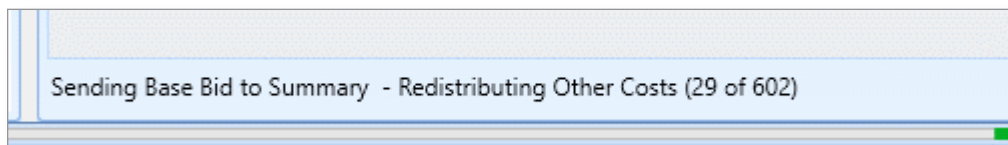
Performance Increases

We improved the speed of several areas in Extension and sending to Bid Summary.

In many of these areas we have cut the time in half, depending on the size of the job.

- Copy summaries
- Send to summary combined and separate
- Overwrite price on an unlinked extension
- Changing the material filter

In addition, we included more informative progress bars in Extension and Bid Summary.



Bid Summary Distribution Changes

In V16, we introduced the ability to split costs into groupings in the other cost screens of Bid Summary. Based on feedback, we adjusted how these costs are entered and displayed to make it much easier to use and understand.

- You can now directly edit the amount instead of adjusting the unit and multiplier.
- You can also directly edit the amount on grouped labels which will sum up to the top level.

For example, you can add quote amount per floor for Generators, and it will total without having to adjust the unit and multipliers.

<input type="checkbox"/>	Generator		<input checked="" type="checkbox"/>	\$0.00	1.00	\$4,100.00	\$0.00
	Name	Labor Hours				Amount	
	Underground	0.00				\$0.00	
	Floor 1	0.00				\$1,000.00	
	Floor 2	0.00				\$1,100.00	
	Floor 3	0.00				\$2,000.00	
	Roof	0.00				\$0.00	

- We added a *Remaining* column, where if you have a \$15,000 total job quote, you can manually add costs per floor, and this will let you know how much you have left to distribute, or if you have gone over the total quote. Similar to how the Labor screen works. The *Amount* is what carries over to the Bid.

Supplier Quotes								
	R	Name	Supplier	Tax	Unit	Mult	Amount	Remaining
<input type="checkbox"/>		Switchgear	Graybar	<input checked="" type="checkbox"/>	\$15,000.00	1.00	\$15,500.00	(\$500.00)
		Name	Labor Hours				Amount	
		Underground	0.00				\$0.00	
		Floor 1	0.00				\$4,500.00	
		Floor 2	0.00				\$5,000.00	
		Floor 3	0.00				\$6,000.00	
		Roof	0.00				\$0.00	

- Proportional distribution still occurs if you add an amount at the top level, we no longer show the unnecessary Unit/Multiplier calculations on the lower levels.
- You can always turn back on the calculations through the Other Costs Maintenance screen by enabling the *Weighted* checkbox per tab.

BID SUMMARY

Software Maintenance

- Issues occurred when pasting bid summaries after deleting a bid summary.
- An error occurred when deleting all summaries from Bid Summary screen.
- Deleting all suppliers from the new Supplier Quotes window resulted in issues with closing the window.
- Issues occurred when resending to summary after disabling breakouts.
- Proposal Sheet - Issues using short codes in header.
- Tax rate did not display percentage without values in taxed fields.
- Reminders pasted from template jobs were lost when an extension was sent to summary.
- Bid Summary report did not use the *Extended* value from report.
- Bid Summary report displayed duplicate cost codes.
- Tax rate could show as incorrect when changing filters.
- An error occurred if the <Tab> or <Enter> key on the keyboard was selected while in the *Unit* or *Mult* field of the Combined Summary.
- The *Notes* field did not save text.
- An error occurred when opening the Bid Summaries report after copying.
- Exported Bid Summary Detail report formatting issues.

CHANGE ORDER

Software Maintenance

- The amount displayed in the *Markup* section could be incorrect.
- Failure to display saved report name in the Report Preview window.
- Grayed out text in the Report Preview after saving report.
- The incorrect price displayed in some circumstances.
- UI glitch in Comprehensive Change Order report preview.

DEP

Software Maintenance

- Issues taking off in scaled region after setting scale in job details for multiple sheets.
- Lines taken off as negative with drops had positive drop values.
- Printed PDF displayed in portrait instead of the set landscape orientation.

EXTENSION

Software Maintenance

- Issues occurred when exporting to Excel.

- Print preview showed incorrect takeoff order in Extension.
- Issues occurred when using material filters in specific reports.
- Updating a price with different pricing services removed previous updates.
- Totals at bottom of columns did not update if *Show Report Grouping* was not enabled.
- System crashed when opening a certain type of corrupted job.
- Issues occurred when sending to summary with *Breakout* set to "None."

INTEGRATION

Software Maintenance

- Foundation Export - An unnecessary alert occurred when adding budget exports to the queue.
- The *SummaryPages* section exported as *Default* in some cases.
- Stuck in *Queued* in certain cases.
- Cost codes with multiple extensions were slow to load.
- An exception occurred when selecting "Label" but not "Set."
- Budget exports failed when *Foundation Item Integration* was enabled.
- Errors occurred when attempting to save a job with budget exported from McCormick.

PROPOSAL

Software Maintenance

- Proposal Sheet - Supplier quotes were listed in the incorrect order on the Proposal table.
- System - Proposal Sheet errors occurred when merging extension data using "Current Filter."
- Proposal Sheet - Excess decimals appeared in *Other Cost*.

SYSTEM

Software Maintenance

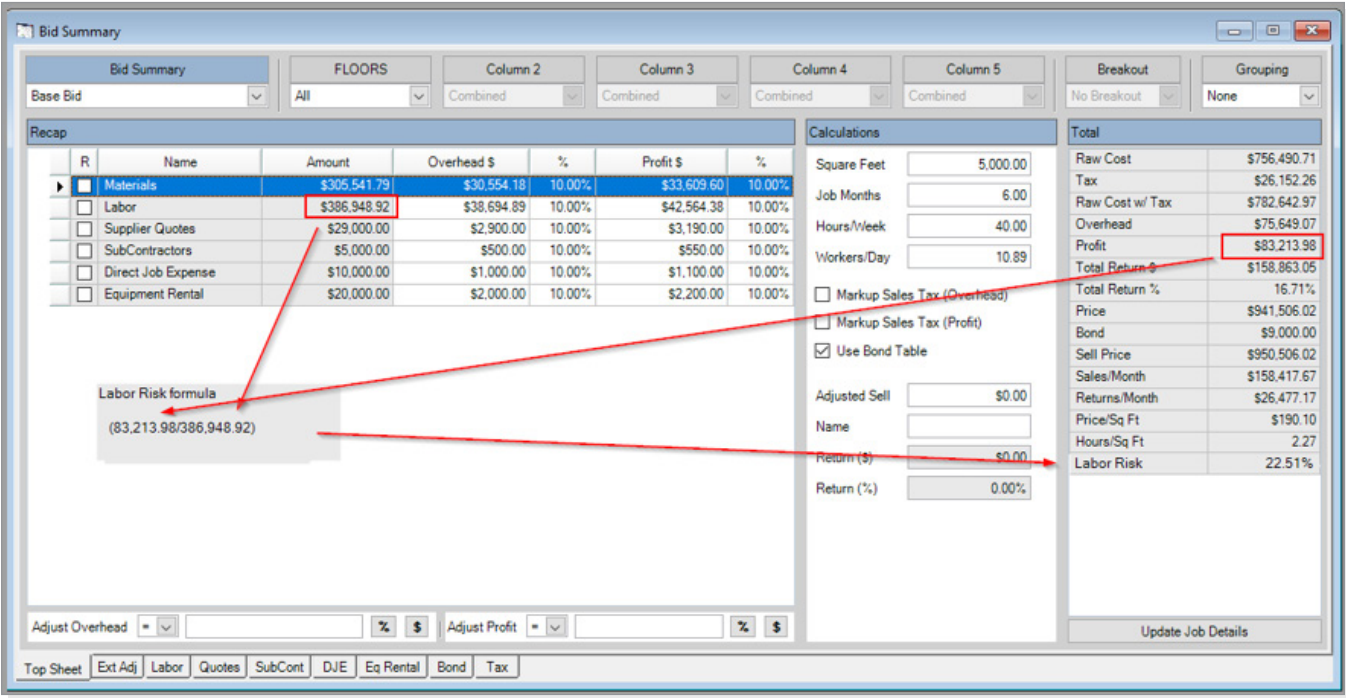
- Displayed "0" values for price per square feet and hours/square feet.
- An alert occurred when names with spaces were entered in the Add Specification window.
- Issues occurred in Excel Price Update when using *Item #* for match.
- The dollar sign displayed incorrectly in the Specs print preview.
- Error converting *Status* in Excel Price Update.
- Removed unusable formula functions.

MCCORMICK V.16.1.0

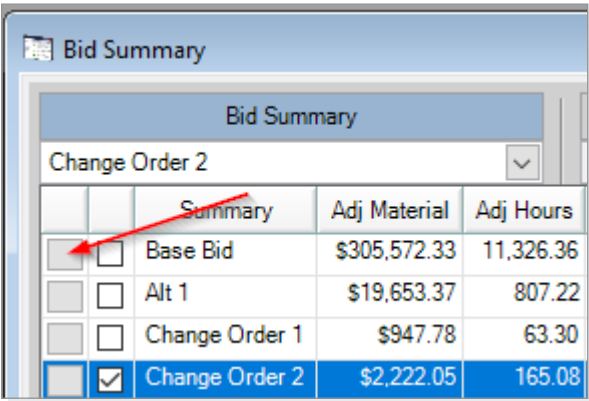
FEATURES

Enhancements

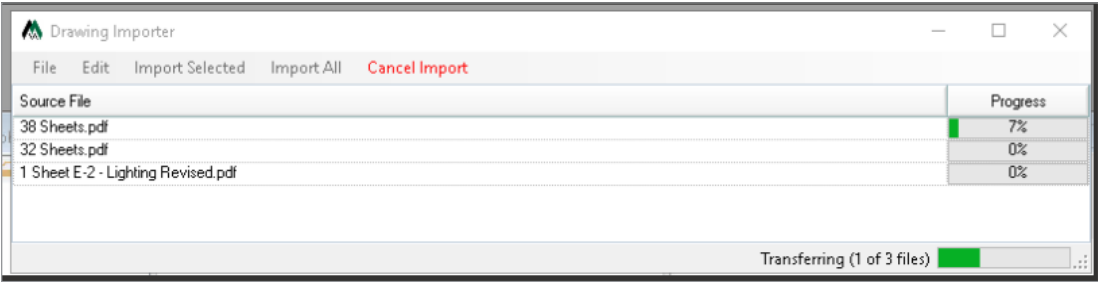
- Labor Risk. 108722



- Bid Summary select — Single click button to change summaries. Instead of select/deselect. 111215



- DEP Drawing load improvements — new progress bar! 51969



BID SUMMARY

Software Maintenance

- Fixed an error that occurred when refreshing data in the Bid Summary Report. 85645
- Leaving bid summary open and resending extension to summary did not refresh values. 91691
- Cost code could not be copied from extension 1 to extension 2. 101600
- The order of the *Cost Totals* section with *Expand Grouping* was incorrect. 112877
- The “Labor” tab may have displayed incorrect data after labor was edited in the “Ext Adj” tab. 114305
- Stopped being able to copy summaries into locked bid summaries. 115220
- Schedule predecessors not set after sending. 117008
- Issues occurred when pasting bid summary information into new job after creating new tab and costs. 123424
- Print preview displayed incorrect values after edited “Ext Adj” tab. 124026

CHANGE ORDER

Software Maintenance

- Errors occurred when opening change order in some databases. 90361
- Issues occurred when deleting a change order. 114239
- The *Totals* row was partly overlapped. 114387
- The “Comprehensive Change Order” option could not be selected. 117321
- Edits to quantity were not reflected in the Comprehensive Change Order Report. 117323
- Profit appeared as positive on negative change orders. 117732
- The *Selected Change Order Totals* area was slightly cut off and difficult to read. 125682
- An error occurred when creating a new Change Order report. 126038

DEP

Software Maintenance

- The *Defined Scale* dropdown sometimes did not close. 57206
- The Audit Trail did not update until it was closed/opened after replacing matching parts. 71813
- The Measuring Tool total was incorrect after adjusting with connected line. 96724
- Homeruns placed on a path with auto count did not attach to a path. 107711
- Display drawing content in the Hot List panel when clicking the Sort icon. 110732
- McCormick (Win3000) showed five labels in the labelset lock option. 116584

EXTENSION

Software Maintenance

- The Labor Hours and Price graphs did not display data. 91680

- Export to Excel had incorrect “Extended Labor” when multiple labor columns were used. 106175
- Extension reports failed to load if the spec name started with a numeric character. 106989
- The Vendor Price Update did not properly display the catalog number and manufacturer. 109240
- A new extension was incorrectly created after updating a vendor. 113612
- Issues occurred with print preview after repasting Extension reports into job with unlinked extensions. 113977
- Update/Overwrite price was not updating *Unit of Measure* for price 1. 115241
- The selected report during copy is not shown until extension is closed and opened. 115401.
- Graphs did not display data. 115610
- Users can now start a price with a decimal instead of zero then decimal. 116590
- Unable to click on the scroll bar to scroll labels when Extension is locked. 116821
- Price updates performed in Extension with a vendor were not pasted to new jobs when “Extension Data” was checked. 125978

PROPOSAL SHEET

Software Maintenance

- An error occurred when merging the template that includes the *Change Order* field. 106682
- The job name did not show on the proposal document. 106692
- Page summaries option did not display all data. 117006
- An error occurred when merging current filter in Bidsummary Proposal Sheet. 124275
- Incorrect labor values displayed in the total on Proposal table. 124889

SYSTEM

Software Maintenance

- Job attachments were not creating a copy of the attached file. 17385
- “Current Filter” exported the Cost Code using the default value. 94233
- Job screen — An error occurred when deleting a “Job” tab that was hidden and contained jobs. 98034
- System - Reordering lists in specs did not follow the spec being reordered. 102016
- Audit Trail — Swapped takeoff was placed into the selected label, not the original label when swapped takeoff was in multiple labels. 107656
- Jobs/Parts Import — Excel did not display the columns correctly as set. 109217
- Foundation Job Budget Export — Export values saved across Jobs. 109925
- System - Errors occurred when updating the price with an Excel file. 114704

- Attach File To System — Duplicate file when copying a file to job. 116772
- Log File — Added “Job deleted by.” 116999
- Labels — The labels order was incorrect after deleting a label that had been moved in the column. 106176

MCCORMICK V.16.0.10

EXTENSION

Software Maintenance

- Edits were not pasted into a new job under certain circumstances. 116792
- Edits to quantity were not displayed in the BidSum report. 117604
- Edits were sometimes deleted after updating with a vendor. 117715
- Edits were lost when using “Update Price” or “Update Labor.” 123167

MCCORMICK V.16.0.9

BID SUMMARY

Software Maintenance

- Save all BidSum values when BidSum loses focus. 64477
- The graphs section did not update in the order of the Bid Summaries that were changed in Manage Bid Summaries. 69749
- The *Total Return %* value on the second page of the Print Report did not match the value on Bid Summary. 73096
- Blank pages appeared in Print Preview. 85204
- When merging the document errors occurred on the Proposal Sheet. 85812
- There was a typo in the new “Supplier Quotes” window. 93501
- The “Totals by Grouping” in the *Other Costs* section was incorrect. 94540
- Changes made to the *Labor Class* order were not displayed correctly. 95607
- Issues using the scroll wheel to change sheets in Print Preview. 95695
- The “Reverse labels” option did not function. 95956
- Issue with displaying the total top container of an extension sent to Bid Summary when opening Bid Summary and Extension at the same time. 97720
- Cost changes did not immediately appear in the BidSum. 98472
- Print Preview displayed incorrect totals when tax totals were set to “Expand Grouping.” 98597
- Issues editing % *Adj* fields. 101543
- Errors occurred with the order of costs when creating a new other cost. 101797
- In some cases, the sell price did not update until Bid Summary was closed and opened.

102559

- The Top Sheet displayed incorrect values for multiple summaries with different tax rates combined. 103348
- Issue with the order of sections in "Total By Grouping." 103357
- The Totals By Grouping Bid Summary Report did not show the summary name on the first page. 104063
- Values were displayed incorrectly in *Top Sheet with Expand Grouping* in Print Preview. 105921
- The position of the bid summary name was incorrect in the *Job Heading* section in Print Preview. 105929
- The labelsets order was incorrect in the *Job Heading* section when the "Totals by Grouping" option was selected. 105932
- The Bid Summary Report did not show adjustments to labor factor. 106832
- Issue with displaying values when grouping Bid Summary in Print Preview. 106878
- Sections were displayed incorrectly when exporting an Excel file from Print Preview if the "Totals by Grouping" layout was selected. 106891
- Issue with Bid Summary Report Material Total. 107273
- Fixed Rounding now going out enough decimal places. 108371
- Changing between locked and unlocked summary did not use the new lock state. 109643
- The breakout order was incorrect in the *Job Heading* section when the "Expand Grouping" option was selected. 110741
- The adjusted % values of Material/Labor were not saved in the *Job Heading* section when the "Expand Grouping" option was selected. 110742
- Could not use the <Enter> key to validate final entry in the "Ext Adj" tab. 111603
- Values entered in the *Unit* field may have been cleared when sending extension to bid summary if *Breakout in Bid Summary* was checked. 111914

CHANGE ORDER

Software Maintenance

- The date format in Change Order screen was inconsistent. 63225
- The current date could not be selected on the Change Order screen. 63226
- Issues with the *Error Date* fields in Change Order window. 63448
- New blank change orders did not display in Change Orders windows. 74573
- An error occurred when entering an *Alert Date*. 75630
- Reports were not shown according to the selected template. 75993
- Edits made to unit of measure in Extension were not displayed in Change Order Report. 106987
- The preview screen did not refresh when selecting a custom report template. 87779

Software Maintenance

- Takeoff did not appear on the DEP sheet for all users. 25696
- Issues with placing the Length Takeoff down over Count Takeoff. 37702
- Users could see other users' takeoff when changing to sheet. 39043
- Takeoff appeared in the incorrect labelset on the legend. 54255
- Issues adding drops to the start and end of a line with a second user. 68524
- Bezier lines did not show drop details. 83611
- The "Highlight Selection" option did not update color changes until DEP was closed or opened. 86326
- Autoscroll scrolled the DEP sheet when the "Select" tool or "Count" takeoff was selected. 92472
- Disabled the "Keep DEP as Top Most Window" setting by default. 93504
- "Reminder Message" could not be edited. 96793
- Issues with audit trail values when "Round to Next" was enabled. 98922
- The legend showed Takeoff in incorrect labelset when grouped by labelset. 107661

EXTENSION

Software Maintenance

- Renaming cost codes caused Takeoff to not show in unlinked extensions. 63387
- Was difficult to determine which extension was selected. 86863
- Editing a value back to the original value did not remove bold text. 91466
- Labels appeared in reverse order when combined in Extension. 91657
- Maintained the selected Extension Report when changing to a different summary and back. 96816
- The value in *Range Edit* did not refresh when opened in another job. 97847
- The multiplier would not be copied when the extension was copied. 98051
- The *New* section in the "Material" tab was blank. 104533
- Issue with Extension Material filters. 106558
- The grid refreshed when using manual cherry pick. 106560
- Print Preview could not be changed to portrait from landscape. 107653
- Auto cherry pick did not function in certain circumstances. 108652
- Unlinked extensions were blank when takeoff and labels in unlinked extensions were deleted. 111367
- Cherry pick prices could be cleared in unlinked extensions. 112082

- The auto cherry pick popup read “Nothing was updated” even when prices were updated. 112105
- Did not allow all labels to be unchecked. 90372

FOUNDATION INTEGRATION

Software Maintenance

- The Current Filter did not omit values. 94231
- Changed Default Source Values. 94235
- Issue with Export Job Name. 94236
- The summary name was used for the job name when doing budget export. 107378
- The *Tax*, *Overhead*, and *Profit* checkboxes did not calculate in the export. 107382

SYSTEM

Software Maintenance

- The Excel parts import failed resulting in a “Key not found” error. 23836
- An error occurred in the Job Screen Print when a job report was edited. 71700
- Text could not be pasted when renaming existing labels. 82422
- An error occurred when <Click to Add> was selected in Labels. 90912
- An error occurred when the *Update Text Overlay* checkbox was selected in Takeoff. 98482
- Email links used an incorrect email when clicked. 106555
- Upgraded to latest version of CodeMeter. 111159