



# RELEASE NOTES

## V.26.5.1 | JUNE 2026

Thank you for taking a moment to review the McCormick V.26.5.1 release notes. This release will update your software to McCormick V.26.5.1.

If you have any questions during the update process, you can contact McCormick support at (800) 444-4890.

## MCCORMICK V.26.5.1

### SYSTEM

---

#### Software Maintenance

- When copying and moving more than one labelset within the Audit Trail, the application froze, forcing the user to manually close it. 257452

## MCCORMICK V.26.5

### FEATURES

---

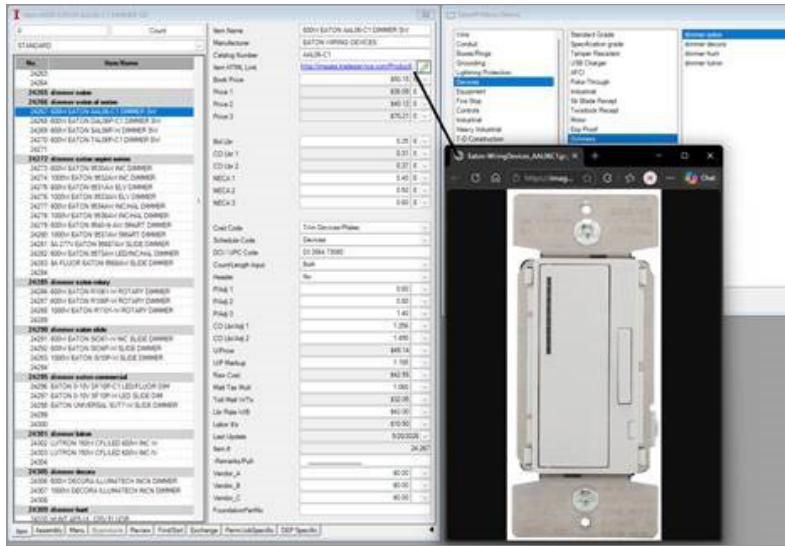
#### Performance & Stability Updates: Bid Summary

- **Massive Speed Increases:** Data transfer from Extensions to the Bid Summary is now up to several hundred times faster, particularly for large-scale jobs featuring multiple breakouts or extensive data sets.
- **Improved Data Integrity:** To eliminate refresh delays and prevent data conflicts, the Bid Summary has transitioned to a single-user access model (matching the Extension workflow). This ensures absolute accuracy and a smoother user experience.

#### Feature Update: "HTML Link" Specification Type

We have introduced a new Hyperlink data type to the specification options.

- **What it does:** Allows users to link directly to PDF cutsheets, item or assembly images, and manufacturer websites.
- **How it works:** Clicking the link opens the URL seamlessly in your default web browser.
- **Getting Started:** If you have the required permissions to modify specifications and want to implement this, please [email Technical Support](#) for step-by-step instructions.



## Performance & Stability Updates: Bid Summary

- **Massive Speed Increases:** Data transfer from Extensions to the Bid Summary is now up to several hundred times faster, particularly for large-scale jobs featuring multiple breakouts or extensive data sets.
- **Improved Data Integrity:** To eliminate refresh delays and prevent data conflicts, the Bid Summary has transitioned to a single-user access model (matching the Extension workflow). This ensures absolute accuracy and a smoother user experience.

## BID SUMMARY

### Software Maintenance

- When an existing summary was resent, the Bid Summary Report showed incorrect values. 211332
- Certain fields duplicated in the Job Specifications section of the General Export. 228635
- When a special page line was added to jobs with more than one bid summary, new suppliers appeared on each page. 236445
- Adding a cost code after updating an existing one caused an error message to appear. 238228
- When an invalid value was entered in a *Calculations* field, the value failed to reset to the previous entry after the warning message appeared. 246116
- In certain instances, attempting to merge a copied extension report caused an error message to appear. 250375
- In the Proposal Sheet window, the *Field* of the Extension section appeared when no Extension Report was selected. 231702
- In certain instances, altering a cost item value and then deleting a different cost item caused the altered cost item values to revert. 250836
- Value entries over "10,000,000,000" caused an error message to appear. 221303
- Page numbers displayed incorrectly when exporting into a Microsoft Word file. 135991

## CHANGE ORDER

---

### Software Maintenance

- In the Itemized Breakdown, the *Net Price* field displayed incorrect values after price adjustments were made. 234423
- When creating a new Change Order Report after successfully exporting a different one, an error message appeared. 234655
- Sections of a Change Order Report would overlap when exported as a PDF. 234657
- Change orders failed to load when the *Sell Price* and *Adjusted Sell Price* both displayed "0." 233045

## DEP

---

### Software Maintenance

- When *Set as default* was enabled for a custom callout, the following callout failed to copy the default settings. 216548
- The *Scale* dropdown within the job details was unavailable for copies of drawings. 149909
- Parts that were copied and pasted remained selected when the DEP window was closed. 234304
- When a part was renamed in the Takeoff window, the DEP overlay failed to show the changes. 246177
- When parts were removed from a drawing, the *Total* and *Selected* values failed to show the new count. 247599
- In certain instances, deleting a Favorites list caused the application to crash. 236466

## EXTENSION

---

### Software Maintenance

- In certain instances, updating the *Quantity* field caused previous changes to fields to disappear. 203075
- The Range Edit function failed to save values previously entered and the <Enter> shortcut did not save changes or trigger pop-up windows. 158530, 234652
- When checkboxes were enabled or disabled in the Extension Report Setup, the changes did not save after the [X] button was selected. 228113
- A pop-up message did not appear when an extension was successfully copied. 234425
- In certain instances, when viewing an extension with combined labels first, attempting to view an extension with separate labels still showed them as combined. 236446
- Custom titles did not retain when an extension report was copied, even after creation. 248700, 250408
- Changes made to an extension did not revert when the extension was relinked. 229388
- A prompt to redistribute costs appeared when no changes were made to the labels. 236941
- When a job was restored, no data appeared and the "Materials" tab was missing. 251146

## HYBRID

---

### Software Maintenance

- In certain instances, deleting takeoffs failed to show them as removed in the Audit Trail. 228161
- When the *Shape Style* of a takeoff was altered, the changes did not show until DEP was closed and opened again. 237425
- When moving between jobs, drawings opened in DEP did not automatically open again when returning to the job. 245318
- When changing a labelset, the note failed to appear in the Audit Trail. 237006
- In certain instances, takeoff lengths disappeared when multiple were placed in quick succession. 224146

## SYSTEM

---

### Software Maintenance

- When importing price updates from Microsoft Excel, some records did not update. 149125
- The job count failed to update correctly when a job was moved between tabs. 251797

## TAKEOFF

---

### Software Maintenance

- Hovering over a dropdown arrow in the Review Takeoff window caused a “0” overlay to appear. 238492
- A duplicate takeoff momentarily appeared when editing properties in the DEP window. 238598

## MCCORMICK V.26.3.1

## SYSTEM

---

### Software Maintenance

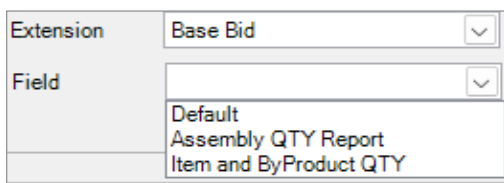
- An error occurred when attempting to merge fields in proposal sheets. 245895

## MCCORMICK V.26.3

## FEATURES

---

Quantified lists of the items/assemblies featured in the Assembly Report and/or the Items & By-products Report will now be available in the Proposal Sheet.



Line Item Detail for Base Bid	
Description	Quantity
4/S 1/2" DEEP 1G MUD RING	100.00
BOX SUPPORT-STUD CLIP	100.00
DUPLEX 15A RECP, STANDARD	100.00
GROUND SCREW/#12 PIGTAIL	100.00
1G IV PLAS DUPL RECP PLATE	100.00
4/S BOX 1-1/2" DEEP	100.00
<b>Totals</b>	<b>600.00</b>

Line Item Detail for Base Bid	
Description	Quantity
DUPLEX STD	100.00
<b>Totals</b>	<b>100.00</b>

## BID SUMMARY

---

### Software Maintenance

- The Bid Summary Report showed incorrect values when the extended fields were edited. 229338
- In certain instances, the Bid Summary Report did not display all sections when printing. 218550
- When the "Totals by Grouping" format was selected, the *Remaining* field displayed with the "\$" unit and showed a value of "0." 226527
- Items grouped in the Extension window split apart when sent to the Proposal Sheet. 225040

## CHANGE ORDER

---

### Software Maintenance

- An error message displayed when selecting a *Report Option* checkbox in the Change Order Report. 227256

## DEP

---

### Software Maintenance

- When hovering the cursor over the takeoff, associated display data did not appear. 226313
- An error message displayed when attempting to logout with items not assigned DEP-specific settings. 225275
- In certain instances, drawings previous locked with labelsets no longer showed as locked when viewed by a different user. 170100

## EXTENSION

---

### Software Maintenance

- When pasting a job with the *Extension Data* checkbox enabled, the report format reverted back to “Price 1 & Bid Labor by Cost Code.” 221002
- Substitution DCI codes were applied to all vendors, causing price updates to fail. 222315
- A stack overflow error occurred when an extension had numerous labels in *Column 1*. 232150

## HYBRID

---

### Software Maintenance

- The application crashed when attempting to insert an image with a drawing tool. 225221
- In certain instances, an error message displayed when attempting to delete an Extension or Other Cost of a Bid Summary. 226245
- Dates returned from the API did not match a user’s international date formatting. 231903
- Users were able to paste or move takeoffs into a deleted labelset, causing errors in the Audit Trail. 224973

## MCCORMICK V.26.2

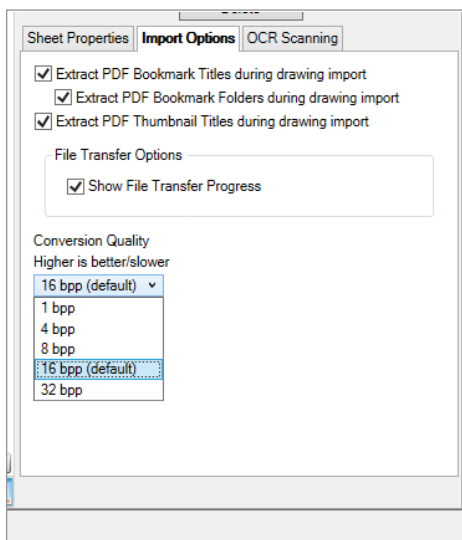
## FEATURES

---

- Added the *Conversion Quality* setting to all McCormick platforms. 21488

This release introduces the ability to lower color conversion quality for images. This feature does not impact the resolution of images, only the color depth.

The *Conversion Quality* default setting has been lowered to “16 bpp.” This change will reduce the file size with no noticeable reduction in quality. This setting can be changed at your discretion.



## BID SUMMARY

---

### Software Maintenance

- An error occurred when attempting repeated deletes of bid summaries after creating summaries in Extension. 155879
- An error occurred when deleting newly created summaries in the “Manage Bid Summaries” window. 155899
- An error pop-up appeared when opening Bid Summary Report after sending an improper report type to Bid Summary. 213923
- Overhead percentage was not correct when combining two bid summaries with different percentages. 214747
- Multiple entries appeared for the same label when separating costs. 215605
- The Bid Summary Report did not update after cost codes were changed in Extension. 218380
- The *Labor Hours* data added from the other cost tabs were not being shown in the *Top Sheet* section of the Bid Summary Report print preview. 220022

## CHANGE ORDER

---

### Software Maintenance

- Fixed an issue with general performance and runtime. 210329
- The Change Order Report creation timed out, forcing users to close and open it again. 210330
- Removed unnecessary information from the *Job* column. 210331
- The *Bond Value* data was not included in the *Final Amount* of the Change Order Report. 212117
- The application crashed when reopening the Change Order Report after updating cost values in Bid Summary. 213229
- Removed the *Total* field from the *Qty* column of the Change Order Report. 214846
- Fixed an issue where the customer address incorrectly pulled from the *Job Address* field. 214849
- Reopening Change Order after being minimized and closed resulted in an error. 216214

## DEP

---

### Software Maintenance

- When copying and pasting a text box, it did not paste at the expected location. 207299
- When copying and pasting an arrow or line annotation, it did not paste at the expected location. 207706
- Labels from position “10” and onward were not sorted in ascending/descending order in the Legend List. 213927
- The order of labels in the *Labels* filter becomes unsorted when more than 10 labelsets are used. 213933

- DEP Help failed to display content. 213934
- When *Round to the Next* and *Multiplier* were enabled in Preferences, unexpected values occurred. 214092
- The *Exclude Items with Takeoff* checkbox disabled itself when double-clicking the Search Result icon. 216551
- Autocount search results were deleted, despite selecting [No] after selecting [Delete]. 216782
- Corrected a misspelling in the Confirm Deletion prompt. 216785

## EXTENSION

---

### Software Maintenance

- Removed an unexpected pop-up. 142317
- The Parent value of labor item appeared incorrectly when the price for same item was set to X (Exempt). 208556
- A program error occurred when sending an Item or Assembly report type to Bid Summary. 213627
- The *Extended Price* field in the "Items" tab displayed incorrectly after viewing the Print Preview. 216776
- A pop-up incorrectly appeared when opening the Print Preview after setting the *Material* filter. 217253
- Deleting a value in a field did not restore the previous value after clicking outside of the program. 217254
- When the "Manual Cherry Pick Price" option was selected, some prices in a column were still not selected after performing a price update. 219076
- A blank extension appeared after temporary parts were updated with a specific DCI code. 219162
- The Print Preview sometimes had missing item details after being sent to Bid Summary. 220718

## SYSTEM

---

### Software Maintenance

- An Invalid prompt appeared in the Formulas window when selecting a formula using ABS. 152700
- An Invalid prompt appeared in the Formulas window when selecting a formula using "AVERAGE" or "AverageZ" function. 152702
- "DEP Specific" tab failed to show a new DEP layer when Takeoff windows were open. 215156
- Fixed an issue where Extension crashed after separating labels. 218438
- Fixed an issue with TraserSX SDK price updates. 221207